

Catalog Number: **230-00598**

Recombinant Human Cytokeratin 6A**Source**

Species	Human
Accession Number	P02538
Gene Symbol	KRT6A
Gene ID	3853
Expressed Region	Ala2-His564
Synonyms	Cytokeratin 6A, CK-6A

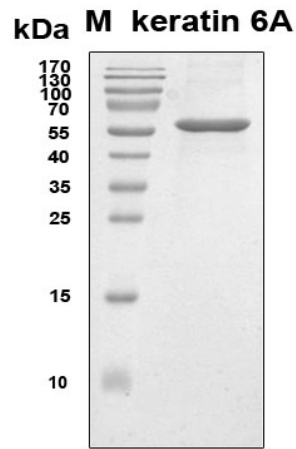
Preparation

Expression System	E.Coli
Tag	N-terminal 6x histidine tag
Purification	His-tag affinity purification by immobilized metal ion affinity chromatography (IMAC)
Purity	> 95%
Purity Determined By	SDS-PAGE under reducing conditions and visualized by Coomassie blue staining
Molecular Weight	62

Protein Specifications

Format	Liquid
Formulation	Supplied as a 0.2 um filtered solution in 100 mM NaH ₂ PO ₄ , 10 mM Tris-HCl, 6 M Urea, 600 mM Imidazole (pH 8.0).
Concentration	Lot specific (see the label on the vial)
Preservative	None
Endotoxin Level	Not determined

SDS-PAGE Image



Shipping

Ice packs

Storage/Stability

Upon arrival, the protein may be stored for 2 weeks at 4 °C. For long term storage, it is recommended to store at -20 °C or -80 °C in appropriate aliquots. Avoid repeated freeze-thaw cycles.

This product is furnished for **LABORATORY RESEARCH USE ONLY**.

Not for diagnostic or therapeutic use.