

---

**Recombinant Human S100A1****Source**

<b>Species</b>	Human
<b>Accession Number</b>	P23297
<b>Gene Symbol</b>	S100A1
<b>Gene ID</b>	6271
<b>Expressed Region</b>	Gly2-Ser94
<b>Synonyms</b>	Protein S100-A1, S-100 protein alpha chain

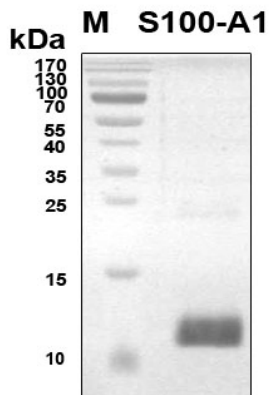
**Preparation**

<b>Expression System</b>	E.Coli
<b>Tag</b>	N-terminal 6x histidine tag
<b>Purification</b>	His-tag affinity purification by immobilized metal ion affinity chromatography (IMAC)
<b>Purity</b>	> 95%
<b>Purity Determined By</b>	SDS-PAGE under reducing conditions and visualized by Coomassie blue staining
<b>Molecular Weight</b>	12.8

**Protein Specifications**

<b>Format</b>	Liquid
<b>Formulation</b>	Supplied as a 0.2 µm filtered solution in PBS.
<b>Concentration</b>	Lot specific (see the label on the vial)
<b>Preservative</b>	None
<b>Endotoxin Level</b>	Not determined
<b>Recommended Applications</b>	ELISA, EIA, protein-protein interaction studies, Western Blotting, Dot Blotting, Immunoprecipitation, Protein Array

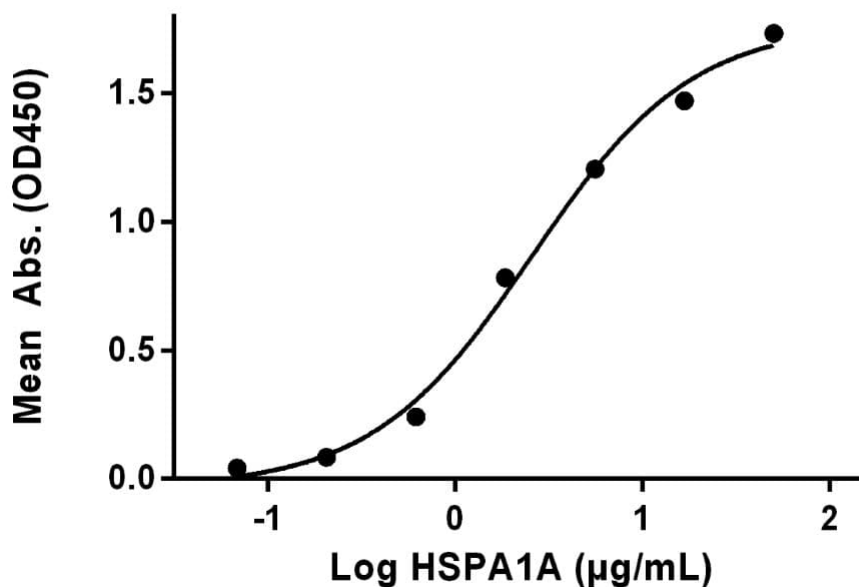
SDS-PAGE Image



**Activity**

Measured by its binding ability in a functional ELISA. Immobilized recombinant S100A1 at 1  $\mu\text{g/mL}$  (100  $\mu\text{L/well}$ ) can bind Human HSPA1A with  $\text{EC}_{50}$  at 2.5  $\mu\text{g/mL}$ .

**Human S100A1, His Tag ELISA**  
0.1  $\mu\text{g}$  of Human S100A1, His Tag per well



**Shipping**

Ice packs

**Storage/Stability**

Upon arrival, the protein may be stored for 2 weeks at 4  $^{\circ}\text{C}$ . For long term storage, it is recommended to store at -20  $^{\circ}\text{C}$  or -80  $^{\circ}\text{C}$  in appropriate aliquots. Avoid repeated freeze-thaw cycles.

This product is furnished for LABORATORY RESEARCH USE ONLY.

Not for diagnostic or therapeutic use.