

---

**Recombinant Human CXCL2****Source**

<b>Species</b>	Human
<b>Accession Number</b>	P19875
<b>Gene Symbol</b>	CXCL2
<b>Gene ID</b>	2920
<b>Expressed Region</b>	Ala35-Asn107
<b>Synonyms</b>	C-X-C motif chemokine 2, MIP2-alpha, Gro-beta, CINC-3

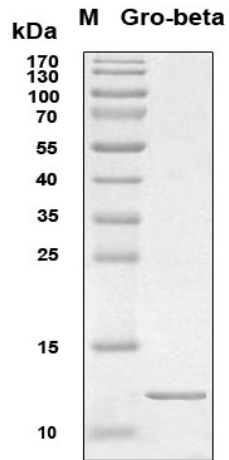
**Preparation**

<b>Expression System</b>	E.Coli
<b>Tag</b>	N-terminal 6x histidine tag
<b>Purification</b>	His-tag affinity purification by immobilized metal ion affinity chromatography (IMAC)
<b>Purity</b>	> 95%
<b>Purity Determined By</b>	SDS-PAGE under reducing conditions and visualized by Coomassie blue staining
<b>Molecular Weight</b>	10.2

**Protein Specifications**

<b>Format</b>	Liquid
<b>Formulation</b>	Supplied as a 0.2 um filtered solution in 100 mM NaH <sub>2</sub> PO <sub>4</sub> , 10 mM Tris-HCl, 6 M Urea, 200 mM Imidazole (pH 8.0).
<b>Concentration</b>	Lot specific (see the label on the vial)
<b>Preservative</b>	None
<b>Endotoxin Level</b>	Not determined

## SDS-PAGE Image



## Shipping

Ice packs

## Storage/Stability

Upon arrival, the protein may be stored for 2 weeks at 4 °C. For long term storage, it is recommended to store at -20 °C or -80 °C in appropriate aliquots. Avoid repeated freeze-thaw cycles.

This product is furnished for **LABORATORY RESEARCH USE ONLY**.

Not for diagnostic or therapeutic use.