
Recombinant Human Elastase

Source

Species	Human
Accession Number	P08246
Gene Symbol	ELANE
Gene ID	1991
Expressed Region	Ile30-His267
Synonyms	Neutrophil elastase, Bone marrow serine protease, Elastase-2, Human leukocyte elastase, HLE, Medullasin, PMN elastase, Elastase Neutrophil Expressed, GE, ELA2, HNE, Elastase 2 Neutrophil, NE, Leukocyte Elastase, PMN-E, medullasin, Granulocyte-Derived Elastase, Polymorphonuclear Elastase, SCN1

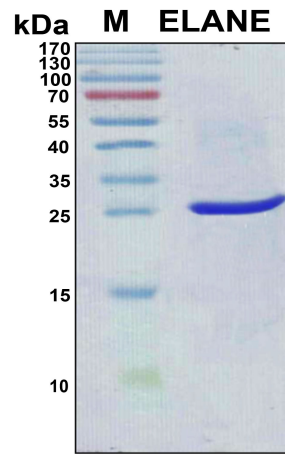
Preparation

Expression System	E.Coli
Tag	N-terminal 6x histidine tag
Purification	His-tag affinity purification by immobilized metal ion affinity chromatography (IMAC)
Purity	> 95%
Purity Determined By	SDS-PAGE under reducing conditions and visualized by Coomassie blue staining
Molecular Weight	25.6

Protein Specifications

Format	Liquid
Formulation	Supplied as a 0.45 um filtered solution in 100 mM NaH ₂ PO ₄ (pH 7.4), 0.3 M NaCl, 8 M urea.
Concentration	Lot specific (see the label on the vial)
Preservative	None
Endotoxin Level	Not determined

SDS-PAGE Image



Shipping

Ice packs

Storage/Stability

Upon arrival, the protein may be stored for 2 weeks at 4 °C. For long term storage, it is recommended to store at -20 °C or -80 °C in appropriate aliquots. Avoid repeated freeze-thaw cycles.

This product is furnished for LABORATORY RESEARCH USE ONLY.

Not for diagnostic or therapeutic use.