

Catalog Number: 230-00697

Recombinant Human C-C motif chemokine 21**Source**

Species	Human
Accession Number	O00585
Gene Symbol	CCL21
Gene ID	6366
Expressed Region	Ser24-Pro134
Synonyms	C-C motif chemokine 21, CKb9, SCYA21, ECL, TCA4, Small Inducible Cytokine Subfamily A (Cys-Cys) Member 21, C-C Motif Chemokine 2, Beta Chemokine Exodus-2, Beta-Chemokine Exodus-2, Efficient Chemoattractant For Lymphocytes, Secondary Lymphoid-Tissue Chemokine, Secondary Lymphoid Tissue Chemokine, Small-Inducible Cytokine A21, 6Ckine, CCL21 protein, Chemokine (C-C motif) ligand 21, Beta-chemokine exodus-2, SLC

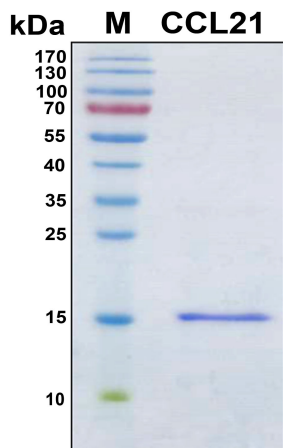
Preparation

Expression System	E.Coli
Tag	N-terminal 6x histidine tag
Purification	His-tag affinity purification by immobilized metal ion affinity chromatography (IMAC)
Purity	> 95%
Purity Determined By	SDS-PAGE under reducing conditions and visualized by Coomassie blue staining
Molecular Weight	11

Protein Specifications

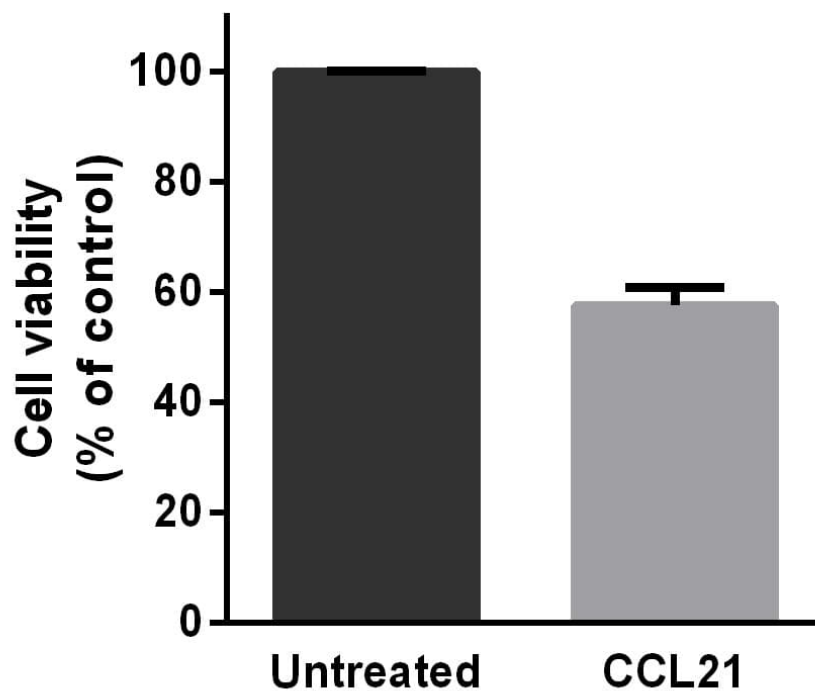
Format	Liquid
Formulation	Supplied as a 0.45 um filtered solution in 100 mM NaH ₂ PO ₄ (pH 7.4), 0.3 M NaCl, 220 mM imidazole.
Concentration	Lot specific (see the label on the vial)
Preservative	None
Endotoxin Level	Not determined
Recommended Applications	ELISA, EIA, protein-protein interaction studies, Western Blotting, Dot Blotting, Immunoprecipitation, Protein Array

SDS-PAGE Image



Activity

Decreasing cell viability significantly. Measured in a cytotoxicity assay using MCF7 human breast cancer cells.



Shipping

Ice packs

Storage/Stability

Upon arrival, the protein may be stored for 2 weeks at 4 °C. For long term storage, it is recommended to store at -20 °C or -80 °C in appropriate aliquots. Avoid repeated freeze-thaw cycles.

This product is furnished for LABORATORY RESEARCH USE ONLY.

Not for diagnostic or therapeutic use.