
Recombinant Human Recoverin Protein

Catalog Number: 230-00699

Data Sheet / Certificate of Analysis (CoA)

Last Revised: 11/26/2024

Source

Species	Human
Accession Number	P35243
Gene Symbols	RCVRN
Synonyms	Recoverin, Cancer-associated retinopathy protein, Protein CAR, RCV1, Cancer-Associated Retinopathy Protein, Cancer Associated Retinopathy Antigen
Expressed Region	Gly2-Ala200

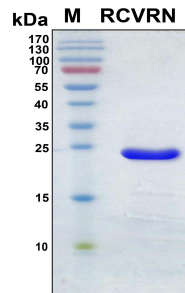
Preparation

Expression System	E. coli
Tag	N-terminal 6x histidine tag
Purity	> 95%
Molecular Weight	25.7 kDa
Endotoxin Level	Not determined

Specifications

Format	Lyophilized powder
Formulation	Lyophilized from a 0.45 µm filtered solution in PBS
Reconstitution	Briefly spin the vial and bring the contents to the bottom prior to opening. It is recommended to reconstitute at 0.5 - 1.0 mg/mL with sterile deionized water or 1x PBS.

SDS-PAGE Image



Shipping

The product is shipped with ice packs. Upon arrival, immediately store it at the temperature recommended below.

Storage/Stability

- Use a manual defrost freezer and avoid repeated freeze-thaw cycles.
- Upon arrival, the lyophilized protein may be stored for 2 weeks at 4°C.
- For long term storage, it is recommended to store desiccated below -20°C in a manual defrost freezer.
- Generally, the shelf life is up to 12 months from date of receipt at -20°C or -80°C under sterile conditions.
- Following reconstitution, the protein may be stored for 2 weeks under sterile conditions at -20°C. For long term storage, it is recommended to make appropriate aliquots at -20°C or -80°C.