

Catalog Number: 230-00711

Recombinant Human Inosine-5'-monophosphate dehydrogenase 2 (IMPDH 2)**Source**

Species	Human
Accession Number	P12268
Gene Symbol	IMPDH2
Gene ID	3615
Expressed Region	Ala2-Phe514
Synonyms	Inosine-5'-monophosphate dehydrogenase 2, IMP dehydrogenase 2, IMPD 2, IMPDH 2, IMPDH-II, IMPD2, IMP (Inosine Monophosphate) Dehydrogenase 2, Inosine Monophosphate Dehydrogenase Type II, Inosine-5-Monophosphate Dehydrogenase 2, Inosine 5 Phosphate Dehydrogenase 2, IMP Oxireductase 2

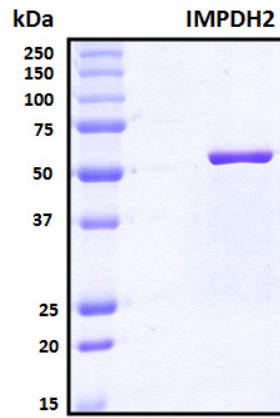
Preparation

Expression System	E.Coli
Tag	N-terminal 6x histidine tag
Purification	His-tag affinity purification by immobilized metal ion affinity chromatography (IMAC)
Purity	> 95%
Purity Determined By	SDS-PAGE under reducing conditions and visualized by Coomassie blue staining
Molecular Weight	58

Protein Specifications

Format	Liquid
Formulation	Supplied as a 0.45 um filtered solution in 50 mM NaH ₂ PO ₄ (pH 7.4), 0.3 M NaCl, 80 mM imidazole, 2 M urea.
Concentration	Lot specific (see the label on the vial), determined by Bio-Rad protein assay dye reagent concentrate.
Preservative	None
Endotoxin Level	Not determined

SDS-PAGE Image



Shipping

Ice packs

Storage/Stability

Upon arrival, the protein may be stored for 2 weeks at 4 °C. For long term storage, it is recommended to store at -20 °C or -80 °C in appropriate aliquots. Avoid repeated freeze-thaw cycles.

This product is furnished for LABORATORY RESEARCH USE ONLY.

Not for diagnostic or therapeutic use.