

---

**Recombinant mouse IL-16****Source**

<b>Species</b>	Mouse
<b>Accession Number</b>	O54824
<b>Gene Symbol</b>	IL16
<b>Gene ID</b>	16170
<b>Expressed Region</b>	Ser1205-Ser1322
<b>Synonyms</b>	Interleukin 16, Lymphocyte Chemoattractant Factor, Prointerleukin 16, LCF, Interleukin 16 (Lymphocyte Chemoattractant Factor), Neuronal Interleukin 16, Pro-Interleukin-16, PrIL-16, PRIL16, NIL16

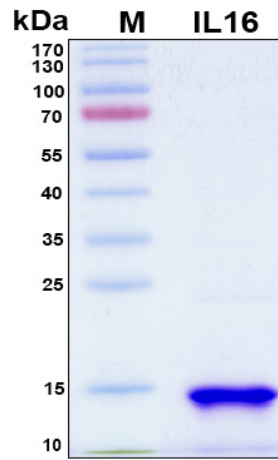
**Preparation**

<b>Expression System</b>	E.Coli
<b>Tag</b>	N-terminal 6x histidine tag
<b>Purification</b>	His-tag affinity purification by immobilized metal ion affinity chromatography (IMAC)
<b>Purity</b>	> 90%
<b>Purity Determined By</b>	SDS-PAGE under reducing conditions and visualized by Coomassie blue staining
<b>Molecular Weight</b>	14

**Protein Specifications**

<b>Format</b>	Liquid
<b>Formulation</b>	Supplied as a 0.45 um filtered solution in 1x PBS (pH 7.4)
<b>Concentration</b>	Lot specific (see the label on the vial), determined by Bio-Rad protein assay dye reagent concentrate.
<b>Preservative</b>	None
<b>Endotoxin Level</b>	Not determined
<b>Recommended Applications</b>	Protein-protein Interaction, Post-translational Modifications, ELISA, EIA, Western Blotting, Dot Blotting, Immunoprecipitation, Protein Array, etc.

SDS-PAGE Image



## Shipping

Ice packs

## Storage/Stability

Upon arrival, the protein may be stored for 2 weeks at 4 °C. For long term storage, it is recommended to store at -20 °C or -80 °C in appropriate aliquots. Avoid repeated freeze-thaw cycles.

This product is furnished for **LABORATORY RESEARCH USE ONLY**.

Not for diagnostic or therapeutic use.