

Catalog Number: 230-00722

Recombinant Human HtrA2

Source

Species	Human
Accession Number	O43464
Gene Symbol	HTRA2
Gene ID	27429
Expressed Region	Ala134-Glu458
Synonyms	HtrA Serine Peptidase 2, PRSS25, OMI, High Temperature Requirement Protein A2, Omi Stress-Regulated Endoprotease, Serine Proteinase OMI, Protease, Serine, 25, Serine Protease 25, EC 3.4.21.108, PARK13, Serine Protease HTRA2, Mitochondrial, HtrA-Like Serine Protease, HtrA2

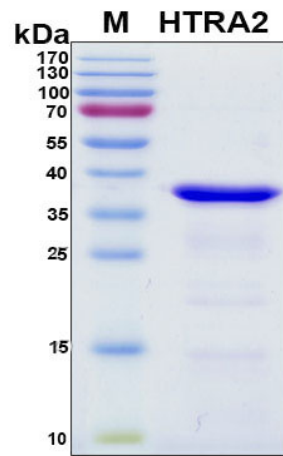
Preparation

Expression System	E.Coli
Tag	N-terminal 6x histidine tag
Purification	His-tag affinity purification by immobilized metal ion affinity chromatography (IMAC)
Purity	> 90%
Purity Determined By	SDS-PAGE under reducing conditions and visualized by Coomassie blue staining
Molecular Weight	37

Protein Specifications

Format	Liquid
Formulation	Supplied as a 0.45 um filtered solution in 50 mM NaH ₂ PO ₄ (pH 7.4), 0.3 M NaCl, 800 mM imidazole, 6M Urea.
Concentration	Lot specific (see the label on the vial), determined by Bio-Rad protein assay dye reagent concentrate.
Preservative	None
Endotoxin Level	Not determined

SDS-PAGE Image



Shipping

Ice packs

Storage/Stability

Upon arrival, the protein may be stored for 2 weeks at 4 °C. For long term storage, it is recommended to store at -20 °C or -80 °C in appropriate aliquots. Avoid repeated freeze-thaw cycles.

This product is furnished for **LABORATORY RESEARCH USE ONLY**.

Not for diagnostic or therapeutic use.