
Recombinant Human WAF1

Source

Species	Human
Accession Number	P38936
Gene Symbol	CDKN1A
Gene ID	1026
Expressed Region	Ser2-Pro164
Synonyms	Cyclin-Dependent Kinase Inhibitor 1A (P21, Cip1), CDKN1, CIP1, WAF1, CDK-Interacting Protein 1, CAP20, MDA-6, SDI1, P21, Melanoma Differentiation Associated Protein 6, Melanoma Differentiation-Associated Protein 6, Cyclin-Dependent Kinase Inhibitor 1, Wild-Type P53-Activated Fragment 1, CDK-Interaction Protein 1, DNA Synthesis Inhibitor, P21CIP1, MDA6, PIC1

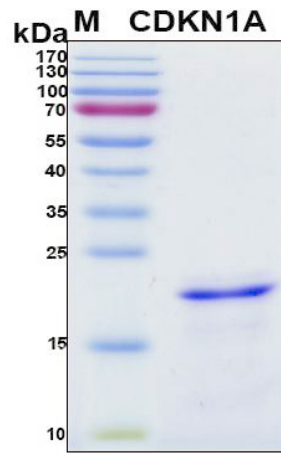
Preparation

Expression System	E.Coli
Tag	N-terminal 6x histidine tag
Purification	His-tag affinity purification by immobilized metal ion affinity chromatography (IMAC)
Purity	> 90%
Purity Determined By	SDS-PAGE under reducing conditions and visualized by Coomassie blue staining
Molecular Weight	20

Protein Specifications

Format	Liquid
Formulation	Supplied as a 0.45 um filtered solution in 50 mM NaH ₂ PO ₄ (pH 7.4), 0.3 M NaCl, 30 mM imidazole, 6M Urea.
Concentration	Lot specific (see the label on the vial), determined by Bio-Rad protein assay dye reagent concentrate.
Preservative	None
Endotoxin Level	Not determined

SDS-PAGE Image



Shipping

Ice packs

Storage/Stability

Upon arrival, the protein may be stored for 2 weeks at 4 °C. For long term storage, it is recommended to store at -20 °C or -80 °C in appropriate aliquots. Avoid repeated freeze-thaw cycles.

This product is furnished for LABORATORY RESEARCH USE ONLY.

Not for diagnostic or therapeutic use.