

Catalog Number: 230-00726

**Recombinant mouse PDGF subunit B****Source**

<b>Species</b>	Mouse
<b>Accession Number</b>	P31240
<b>Gene Symbol</b>	PDGFB
<b>Gene ID</b>	18591
<b>Expressed Region</b>	Ser82-Thr190
<b>Synonyms</b>	Platelet-Derived Growth Factor Beta Polypeptide, Becaplermin, SIS, Platelet-Derived Growth Factor Beta Polypeptide (Simian Sarcoma Viral (V-Sis) Oncogene Homolog), Platelet-Derived Growth Factor B Chain, Proto-Oncogene C-Sis, PDGF Subunit B, PDGF-2, IBGC5, PDGF2, Platelet-Derived Growth Factor, Beta Polypeptide (Oncogene SIS), Platelet-Derived Growth Factor Subunit B, Platelet-Derived Growth Factor 2, PDGF, B Chain, Oncogene SIS, C-Sis, SSV

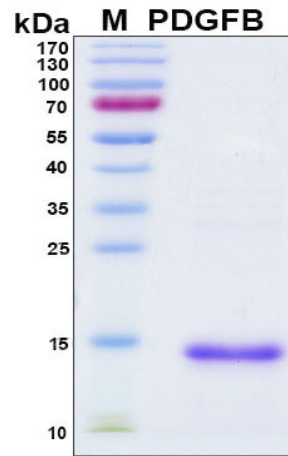
**Preparation**

<b>Expression System</b>	E.Coli
<b>Tag</b>	N-terminal 6x histidine tag
<b>Purification</b>	His-tag affinity purification by immobilized metal ion affinity chromatography (IMAC)
<b>Purity</b>	> 90%
<b>Purity Determined By</b>	SDS-PAGE under reducing conditions and visualized by Coomassie blue staining
<b>Molecular Weight</b>	14

**Protein Specifications**

<b>Format</b>	Liquid
<b>Formulation</b>	Supplied as a 0.45 um filtered solution in 50 mM NaH <sub>2</sub> PO <sub>4</sub> (pH7.4), 0.3 M NaCl, 4 M urea.
<b>Concentration</b>	Lot specific (see the label on the vial), determined by Bio-Rad protein assay dye reagent concentrate.
<b>Preservative</b>	None
<b>Endotoxin Level</b>	Not determined

SDS-PAGE Image



## Shipping

Ice packs

## Storage/Stability

Upon arrival, the protein may be stored for 2 weeks at 4 °C. For long term storage, it is recommended to store at -20 °C or -80 °C in appropriate aliquots. Avoid repeated freeze-thaw cycles.

This product is furnished for **LABORATORY RESEARCH USE ONLY**.

Not for diagnostic or therapeutic use.