
Recombinant Mouse Serpin F1 (PEDF) Protein

Catalog Number: 230-00729

Data Sheet / Certificate of Analysis (CoA)

Last Revised: 11/26/2024

Source

Species	Mouse
Accession Number	P97298
Gene Symbols	SERPINF1
Synonyms	Serpin Peptidase Inhibitor, Clade F (Alpha-2 Antiplasmin, Pigment Epithelium Derived Factor), Member 1, PEDF, Serine (Or Cysteine) Proteinase Inhibitor, Clade F (Alpha-2 Antiplasmin, Pigment Epithelium Derived Factor), Member 1, Cell Proliferation-Inducing Gene 35 Protein, Pigment Epithelium-Derived Factor, Serpin F1, EPC-1, OI6, Proliferation-Inducing Protein 35, PIG35, OI12
Expressed Region	Gln20-Thr417

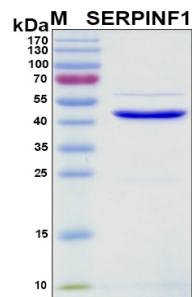
Preparation

Expression System	E. coli
Tag	N-terminal 6x histidine tag
Purity	> 90%
Molecular Weight	46 kDa
Endotoxin Level	Not determined

Specifications

Format	Lyophilized powder
Formulation	Lyophilized from a 0.45 µm filtered solution in PBS (pH 7.4)
Concentration	Determined by BCA protein assay kit (Thermo Scientific)
Reconstitution	Briefly spin the vial and bring the contents to the bottom prior to opening. It is recommended to reconstitute at 0.5 - 1.0 mg/mL with sterile deionized water or 1x PBS.

SDS-PAGE Image



Shipping

The product is shipped with ice packs. Upon arrival, immediately store it at the temperature recommended below.

Storage/Stability

- Use a manual defrost freezer and avoid repeated freeze-thaw cycles.
- Upon arrival, the lyophilized protein may be stored for 2 weeks at 4°C.
- For long term storage, it is recommended to store desiccated below -20°C in a manual defrost freezer.
- Generally, the shelf life is up to 12 months from date of receipt at -20°C or -80°C under sterile conditions.
- Following reconstitution, the protein may be stored for 2 weeks under sterile conditions at -20°C. For long term storage, it is recommended to make appropriate aliquots at -20°C or -80°C.