

Catalog Number: 230-00730

Recombinant mouse Serpin E1**Source**

Species	Mouse
Accession Number	Q7TPE9
Gene Symbol	SERPINE1
Expressed Region	Leu24-Ser402
Synonyms	Serpin Peptidase Inhibitor, Clade E (Nexin, Plasminogen Activator Inhibitor Type 1), Member 1, PAI1, Serine (Or Cysteine) Proteinase Inhibitor, Clade E (Nexin, Plasminogen Activator Inhibitor Type 1), Member 1, Endothelial Plasminogen Activator Inhibitor, Serpin E1, PLANH1, PAI-1, PAI, Plasminogen Activator Inhibitor 1, Plasminogen Activator Inhibitor, PLANH1, Type I

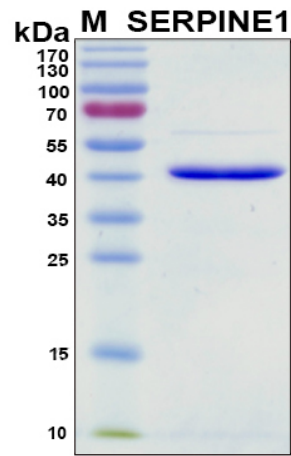
Preparation

Expression System	E.Coli
Tag	N-terminal 6x histidine tag
Purification	His-tag affinity purification by immobilized metal ion affinity chromatography (IMAC)
Purity	> 90%
Purity Determined By	SDS-PAGE under reducing conditions and visualized by Coomassie blue staining
Molecular Weight	44

Protein Specifications

Format	Liquid
Formulation	Supplied as a 0.45 um filtered solution in 50 mM NaH ₂ PO ₄ (pH7.4), 0.3 M NaCl, 200 mM imidazole, 6 M urea.
Concentration	Lot specific (see the label on the vial), determined by Bio-Rad protein assay dye reagent concentrate.
Preservative	None
Endotoxin Level	Not determined

SDS-PAGE Image



Shipping

Ice packs

Storage/Stability

Upon arrival, the protein may be stored for 2 weeks at 4 °C. For long term storage, it is recommended to store at -20 °C or -80 °C in appropriate aliquots. Avoid repeated freeze-thaw cycles.

This product is furnished for **LABORATORY RESEARCH USE ONLY**.

Not for diagnostic or therapeutic use.