

---

## Recombinant Human CITED1 (MSG1) Protein

**Catalog Number:** 230-01156

**Data Sheet / Certificate of Analysis (CoA)**

Last Revised: 11/12/2024

### Source

---

<b>Species</b>	Human
<b>Accession Number</b>	Q99966
<b>Gene Symbols</b>	CITED1
<b>Synonyms</b>	Cbp/p300-interacting transactivator 1, Melanocyte-specific protein 1.
<b>Expressed Region</b>	Pro2-Cys193

### Preparation

---

<b>Expression System</b>	E. coli
<b>Tag</b>	N-terminal His-tag
<b>Purity</b>	>90%
<b>Molecular Weight</b>	26 kDa

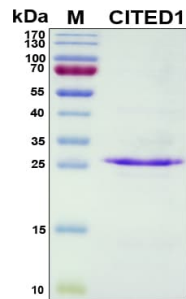
### Specifications

---

<b>Format</b>	Liquid
<b>Formulation</b>	Supplied as a 0.2 µm filtered solution in 15 mM Na <sub>2</sub> HPO <sub>4</sub> (pH 7.4), 5 mM NaH <sub>2</sub> PO <sub>4</sub> , 0.5 M NaCl, 40 mM imidazole, 6 M urea.
<b>Concentration</b>	Refer to the label on the vial for the specific concentration, determined by Bio-Rad Bradford protein dye reagent concentrate.

---

**SDS-PAGE Image**



---

**Shipping**

The product is shipped with ice packs. Upon arrival, immediately store it at the temperature recommended below.

---

**Storage/Stability**

- Use a manual defrost freezer and avoid repeated freeze-thaw cycles.
- Upon arrival, the liquid protein may be stored for 2 weeks at 4°C.
- For long term storage, it is recommended to store at -20°C or -80°C in appropriate aliquots.
- Generally, the shelf life is up to 6 months from the date of receipt at -20°C or -80°C under sterile conditions.