
Recombinant Human Sperm-egg Fusion Protein Juno

Catalog Number: 230-01175

Data Sheet / Certificate of Analysis (CoA)

Last Revised: 11/12/2024

Source

Species	Human
Accession Number	A6ND01
Gene Symbols	IZUMO1R
Synonyms	Folate receptor 4, Folate receptor delta, FR-delta, IZUMO1 receptor protein JUNO.
Expressed Region	Gly20-Ser228

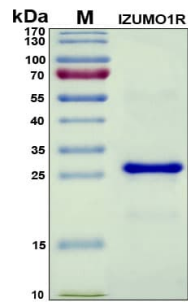
Preparation

Expression System	E. coli
Tag	N-terminal His-tag
Purity	>90%
Molecular Weight	25 kDa

Specifications

Format	Liquid
Formulation	Supplied as a 0.2 μ m filtered solution in 15 mM Na ₂ HPO ₄ (pH 7.4), 5 mM NaH ₂ PO ₄ , 0.5 M NaCl, 40 mM imidazole, 6 M urea.
Concentration	Refer to the label on the vial for the specific concentration, determined by Bio-Rad Bradford protein dye reagent concentrate.

SDS-PAGE Image



Shipping

The product is shipped with ice packs. Upon arrival, immediately store it at the temperature recommended below.

Storage/Stability

- Use a manual defrost freezer and avoid repeated freeze-thaw cycles.
- Upon arrival, the liquid protein may be stored for 2 weeks at 4°C.
- For long term storage, it is recommended to store at -20°C or -80°C in appropriate aliquots.
- Generally, the shelf life is up to 6 months from the date of receipt at -20°C or -80°C under sterile conditions.