
Recombinant Human GDF-15 Protein

Catalog Number: 230-01208

Data Sheet / Certificate of Analysis (CoA)

Last Revised: 11/12/2024

Source

Species	Human
Accession Number	Q99988
Gene Symbols	GDF15
Synonyms	GDF-15, Macrophage inhibitory cytokine 1, MIC-1, NSAID-activated gene 1 protein, NAG-1, NRG-1, Placental TGF-beta.
Expressed Region	Ala195-Ile308

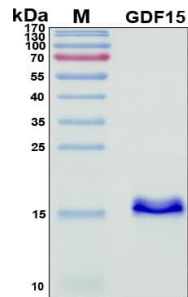
Preparation

Expression System	E. coli
Tag	N-terminal His-tag
Purity	>95%
Molecular Weight	15 kDa

Specifications

Format	Liquid
Formulation	Supplied as a 0.2 µm filtered solution in 50 mM Tris-HCl, 500 mM NaCl, 600 mM Arginine, 2 mM Oxidized Glutathione, 4 mM Reduced Glutathione, 0.2% PEG4000, 10% glycerol, 4 M urea.(pH 9.0)
Concentration	Refer to the label on the vial for the specific concentration, determined by Bio-Rad Bradford protein dye reagent concentrate.

SDS-PAGE Image



Shipping

The product is shipped with ice packs. Upon arrival, immediately store it at the temperature recommended below.

Storage/Stability

- Use a manual defrost freezer and avoid repeated freeze-thaw cycles.
- Upon arrival, the liquid protein may be stored for 2 weeks at 4°C.
- For long term storage, it is recommended to store at -20°C or -80°C in appropriate aliquots.
- Generally, the shelf life is up to 6 months from the date of receipt at -20°C or -80°C under sterile conditions.