

Catalog Number: 230-30163

Recombinant SARS-CoV-2 S2 Subunit Protein (full length)**Source**

Species	SARS-CoV-2
Accession Number	QHD43416
Expressed Region	Met697-Pro1213
Synonyms	Spike protein, S Protein, S2 Subunit

Preparation

Expression System	Human embryonic kidney 293 (HEK293) cells
Tag	C-terminal his-tag
Purification	His-tag affinity purification by immobilized metal ion affinity chromatography (IMAC)
Purity	>90 %
Purity Determined By	SDS-PAGE under reducing conditions and visualized by Coomassie blue staining
Molecular Weight	Recombinant protein product has a calculated molecular mass of ~60 kDa. Due to the abundant glycosylation, it migrates as approximately 80 kDa protein bands in SDS-PAGE under DTT, beta-mercaptoethanol reducing conditions. See deglycosylation analysis image below.

Protein Specifications

Format	Liquid
Formulation	Supplied as a 0.2 um filtered solution in PBS (pH 7.4)
Concentration	Lot specific (see the label on the vial), determined by BCA protein assay

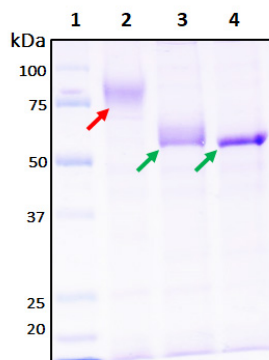
SDS-PAGE Image

Figure 1. Deglycosylation of purified recombinant proteins. Purified proteins were untreated (Lane 2) or treated with Protein Deglycosylation Kit under native (Lane 3) or reducing (Lane 4) conditions. Deglycosylation treatment resulted in a mobility shift of the protein to produce one major band at the expected size (~60 kDa), thus indicating that the untreated recombinant protein (Lane 2, ~80 kDa) was glycosylated.

Lane 1: Protein standard ladder (kDa)

Lane 2: Untreated protein (~80 kDa, red arrow) under reducing conditions

Lane 3: Partially cleaved protein (~60 kDa, green arrow) with deglycosylation enzymes under native conditions

Lane 4: Fully cleaved protein (~60 kDa, green arrow) with deglycosylation enzymes under reducing conditions

Shipping

Ice packs

Storage/Stability

Upon arrival, the protein may be stored for 2 weeks at 4 °C. For long term storage, it is recommended to store at -20 °C or -80 °C in appropriate aliquots. Avoid repeated freeze-thaw cycles.

This product is furnished for LABORATORY RESEARCH USE ONLY.

Not for diagnostic or therapeutic use.