

Catalog Number: 230-30226

Recombinant Human Natriuretic Peptides A (NPPA)

Source

Species	Human
Accession Number	P01160
Gene Symbol	NPPA
Expressed Region	Asn26-Arg153

Synonyms

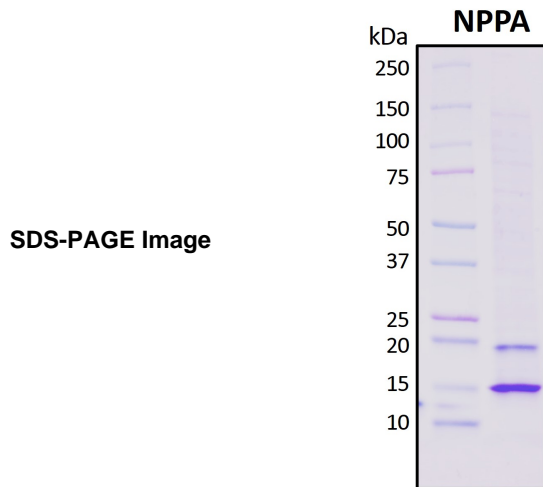
Natriuretic peptides A (Atrial natriuretic factor prohormone) (proANF) (Atrial natriuretic peptide prohormone) (preproANP) (proANP) (Atriopeptigen) (Cardiodilatin) (CDD) (preproCDD-ANF) [Cleaved into: Long-acting natriuretic peptide (LANP) (Long-acting natriuretic hormone) (LANH) (Pro atrial natriuretic factor 1-30) (proANF 1-30) (Pro atrial natriuretic peptide 1-30) (proANP 1-30); Vessel dilator (VSDL) (Pro atrial natriuretic factor 31-67) (proANF 31-67) (Pro atrial natriuretic peptide 31-67) (proANP 31-67); Kaliuretic peptide (KP) (Pro atrial natriuretic factor 79-98) (proANF 79-98) (Pro atrial natriuretic peptide 79-98) (proANP 79-98); Urodilatin (URO) (CDD 95-126) (CDD-ANP (95-126)) (Pro atrial natriuretic peptide 95-126) (proANP 95-126); Auriculin-C (Atrial natriuretic factor 1-33) (ANF 1-33); Auriculin-D (Atrial natriuretic factor 3-33) (ANF 3-33); Atrial natriuretic peptide (ANP) (Alpha-atrial natriuretic peptide) (Alpha-hANP) (Atrial natriuretic factor) (ANF) (CDD-ANF) (CDD-ANP (99-126)) (Cardionatrin) (Pro atrial natriuretic factor 99-126) (proANF 99-126); Auriculin-B (Atrial natriuretic factor 8-33) (ANF 8-33); Auriculin-A; Atriopeptin-1 (Atriopeptin I); Atriopeptin-2 (Atriopeptin II); Atriopeptin-3 (Atriopeptin III)]

Preparation

Expression System	Human Embryonic Kidney 293 Cells
Tag	C-terminal histidine tag
Purification	His-tag affinity purification by immobilized metal ion affinity chromatography (IMAC)
Purity	>90%
Purity Determined By	SDS-PAGE under reducing conditions and visualized by Coomassie blue staining
Molecular Weight	Recombinant protein product has a calculated molecular mass of 15 kDa

Protein Specifications

Format	Liquid
Formulation	Supplied as a 0.2 um filtered solution in PBS (pH 7.4) with 20% glycerol
Concentration	Lot specific (see the label on the vial), determined by Bradford protein assay
Endotoxin Level	0.5 EU per ug of the protein as determined by the LAL method



Shipping

Ice packs

Storage/Stability

Upon arrival, the protein may be stored for 2 weeks at 4°C. For long term storage, it is recommended to store at -20°C or -80°C in appropriate aliquots. Avoid repeated freeze-thaw cycles.

This product is furnished for LABORATORY RESEARCH USE ONLY.

Not for diagnostic or therapeutic use.