

Catalog Number: 230-30241

Recombinant Human FSH beta

Source

Species	Human
Accession Number	P01225
Gene Symbol	FSHB
Expressed Region	Asn19-Glu129
Synonyms	Follitropin subunit beta (Follicle-stimulating hormone beta subunit) (FSH-B) (FSH-beta) (Follitropin beta chain)

Preparation

Expression System	Human Embryonic Kidney 293 Cells
Tag	N-terminal histidine tag
Purification	His-tag affinity purification by immobilized metal ion affinity chromatography (IMAC)
Purity	>95%
Purity Determined By	SDS-PAGE under reducing conditions and visualized by Coomassie blue staining
Molecular Weight	Recombinant protein product has a calculated molecular mass of 15 kDa. Due to the abundant glycosylation, it migrates as approximately 20-25 kDa major protein bands in SDS-PAGE under DTT, beta-mercaptoethanol reducing conditions. See deglycosylation analysis image below.

Protein Specifications

Format	Liquid
Formulation	Supplied as a 0.2 um filtered solution in PBS (pH 7.4) with 1% mannitol and 5% trehalose
Concentration	Lot specific (see the label on the vial), determined by Pierce BCA protein assay
Endotoxin Level	0.5 EU per ug of the protein as determined by the LAL method

SDS-PAGE Image

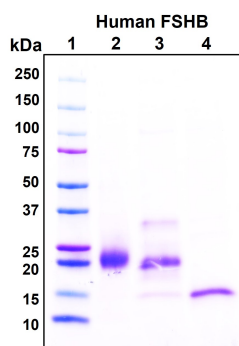


Figure 1. Deglycosylation analysis of purified recombinant proteins. Lane 1, protein ladder (kDa). Lane 2, glycosylated protein (delivered to customers). Lanes 3 and 4, deglycosylated proteins under native and denature conditions respectively.

Shipping

Ice packs

Storage/Stability

Upon arrival, the protein may be stored for 2 weeks at 4°C. For long term storage, it is recommended to store at -20°C or -80°C in appropriate aliquots. Avoid repeated freeze-thaw cycles.

This product is furnished for LABORATORY RESEARCH USE ONLY.

Not for diagnostic or therapeutic use.