

Catalog Number: 230-30243

## Recombinant Human Granzyme B

### Source

Species	Human
Accession Number	P10144
Gene Symbol	GZMB
Expressed Region	Ile21-Tyr247
Synonyms	Granzyme B (EC 3.4.21.79) (C11) (CTLA-1) (Cathepsin G-like 1) (CTSG1) (Cytotoxic T-lymphocyte proteinase 2) (Lymphocyte protease) (Fragmentin-2) (Granzyme-2) (Human lymphocyte protein) (HLP) (SECT) (T-cell serine protease 1-3E)

### Preparation

Expression System	Human Embryonic Kidney 293 Cells
Tag	N-terminal histidine tag
Purification	His-tag affinity purification by immobilized metal ion affinity chromatography (IMAC)
Purity	>95%
Purity Determined By	SDS-PAGE under reducing conditions and visualized by Coomassie blue staining
Molecular Weight	Recombinant protein product has a calculated molecular mass of 26 kDa. Due to the abundant glycosylation, it migrates as approximately 30 kDa major protein band in SDS-PAGE under DTT, beta-mercaptoethanol reducing conditions. See deglycosylation analysis image below.

### Protein Specifications

Format	Liquid
Formulation	Supplied as a 0.2 um filtered solution in PBS (pH 7.4)
Concentration	Lot specific (see the label on the vial), determined by Pierce BCA protein assay
Endotoxin Level	0.5 EU per ug of the protein as determined by the LAL method

### SDS-PAGE Image

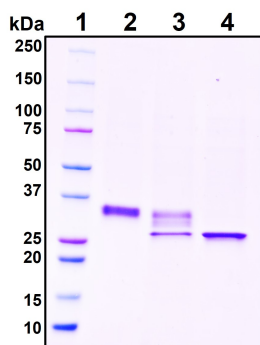


Figure 1. Deglycosylation analysis of purified recombinant proteins. Lane 1, protein ladder (kDa). Lane 2, glycosylated protein (delivered to customers). Lanes 3 and 4, deglycosylated proteins under native and denature conditions respectively.

## Shipping

Ice packs

## Storage/Stability

Upon arrival, the protein may be stored for 2 weeks at 4°C. For long term storage, it is recommended to store at -20°C or -80°C in appropriate aliquots. Avoid repeated freeze-thaw cycles.

This product is furnished for LABORATORY RESEARCH USE ONLY.

Not for diagnostic or therapeutic use.