

---

## Recombinant Human Recoverin Protein, HEK293

**Catalog Number:** 230-30253

### Data Sheet / Certificate of Analysis (CoA)

Last Revised: 11/27/2024

---

### Source

<b>Species</b>	Human
<b>Accession Number</b>	P35243
<b>Gene Symbols</b>	RCVRN
<b>Synonyms</b>	Recoverin, Cancer-associated retinopathy protein (Protein CAR)
<b>Expressed Region</b>	Gly 2-Gla 200

---

### Preparation

<b>Expression System</b>	HEK293 cells
<b>Tag</b>	N-terminal histidine tag
<b>Purity</b>	>95%
<b>Molecular Weight</b>	Recombinant protein product has a calculated molecular mass of 26 kDa. Due to the abundant glycosylation, it migrates as approximately 25-30 kDa protein bands in SDS-PAGE under DTT, beta-mercaptoethanol reducing conditions. See deglycosylation analysis image below.
<b>Endotoxin Level</b>	<0.5 EU per ug of the protein as determined by the LAL method

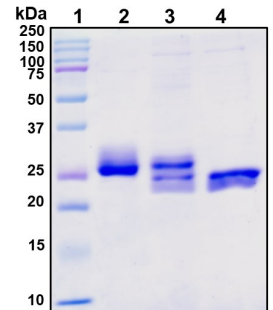
---

### Specifications

<b>Format</b>	Lyophilized powder
<b>Formulation</b>	Lyophilized from a 0.2 µm filtered solution in PBS (pH 7.4) with 1% mannitol and 5% trehalose
<b>Concentration</b>	Determined by Pierce BCA protein assay
<b>Reconstitution</b>	Briefly spin the vial and bring the contents to the bottom prior to opening. It is recommended to reconstitute at 0.5 - 1.0 mg/mL with sterile deionized water.

### SDS-PAGE Image

Figure 1. Deglycosylation analysis of purified recombinant proteins. Lane 1, protein ladder (kDa). Lane 2, glycosylated protein (delivered to customers). Lanes 3 and 4, deglycosylated proteins under native and denature conditions respectively.



### Shipping

The product is shipped with ice packs. Upon arrival, immediately store it at the temperature recommended below.

### Storage/Stability

- Use a manual defrost freezer and avoid repeated freeze-thaw cycles.
- Upon arrival, the lyophilized protein may be stored for 2 weeks at 4°C.
- For long term storage, it is recommended to store desiccated below -20°C in a manual defrost freezer.
- Generally, the shelf life is up to 12 months from date of receipt at -20°C or -80°C under sterile conditions.
- Following reconstitution, the protein may be stored for 2 weeks under sterile conditions at -20°C. For long term storage, it is recommended to make appropriate aliquots at -20°C or -80°C.