

Catalog Number: 230-30259

## Recombinant Human Thy-1 Membrane Glycoprotein

### Source

|                  |   |
|------------------|---|
| Species          | Human   |
| Accession Number | P04216  |
| Gene Symbol      | THY1  |
| Expressed Region | Gln20-Cys130  |
| Synonyms         | Thy-1 membrane glycoprotein (CDw90) (Thy-1 antigen) (CD antigen CD90) |

### Preparation

|                      |   |
|----------------------|---|
| Expression System    | Human Embryonic Kidney 293 Cells  |
| Tag                  | N-terminal histidine tag  |
| Purification         | His-tag affinity purification by immobilized metal ion affinity chromatography (IMAC)   |
| Purity               | >95%  |
| Purity Determined By | SDS-PAGE under reducing conditions and visualized by Coomassie blue staining  |
| Molecular Weight     | Recombinant protein product has a calculated molecular mass of 15 kDa. Due to the abundant glycosylation, it migrates as approximately 30-35 kDa protein bands in SDS-PAGE under DTT, beta-mercaptoethanol reducing conditions. See deglycosylation analysis image below. |

### Protein Specifications

|                 |  |
|-----------------|--|
| Format          | Liquid   |
| Formulation     | Supplied as a 0.2 um filtered solution in PBS (pH 7.4)                         |
| Concentration   | Lot specific (see the label on the vial), determined by Bradford protein assay |
| Endotoxin Level | 0.5 EU per ug of the protein as determined by the LAL method                   |

### SDS-PAGE Image

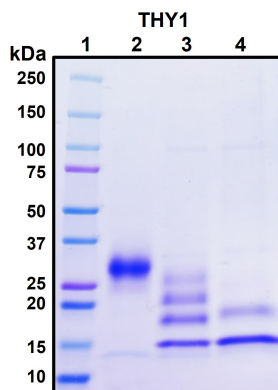


Figure 1. Deglycosylation analysis of purified recombinant proteins. Lane 1, protein ladder (kDa). Lane 2, glycosylated protein (delivered to customers). Lanes 3 and 4, deglycosylated proteins under native and denature conditions respectively.

## Shipping

Ice packs

## Storage/Stability

Upon arrival, the protein may be stored for 2 weeks at 4°C. For long term storage, it is recommended to store at -20°C or -80°C in appropriate aliquots. Avoid repeated freeze-thaw cycles.

This product is furnished for LABORATORY RESEARCH USE ONLY.

Not for diagnostic or therapeutic use.