

Catalog Number: 230-30265

Recombinant Human PD-L1 (CD274)**Source**

Species	Human
Accession Number	Q9NZQ7
Gene Symbol	CD274, PD-L1
Expressed Region	Phe19-Arg238
Synonyms	Programmed cell death 1 ligand 1 (PD-L1) (PDCD1 ligand 1) (Programmed death ligand 1) (hPD-L1) (B7 homolog 1) (B7-H1) (CD antigen CD274)

Preparation

Expression System	Human Embryonic Kidney 293 Cells
Tag	C-terminal histidine tag
Purification	His-tag affinity purification by immobilized metal ion affinity chromatography (IMAC)
Purity	>95%
Purity Determined By	SDS-PAGE under reducing conditions and visualized by Coomassie blue staining
Molecular Weight	Recombinant protein product has a calculated molecular mass of 25 kDa. Due to the abundant glycosylation, it migrates as approximately 35 kDa protein bands in SDS-PAGE under DTT, beta-mercaptoethanol reducing conditions. See deglycosylation analysis image below.

Protein Specifications

Format	Liquid
Formulation	Supplied as a 0.2 um filtered solution in PBS (pH 7.4) with 1% mannitol and 5% trehalose
Concentration	Lot specific (see the label on the vial), determined by Pierce BCA protein assay
Endotoxin Level	0.5 EU per ug of the protein as determined by the LAL method

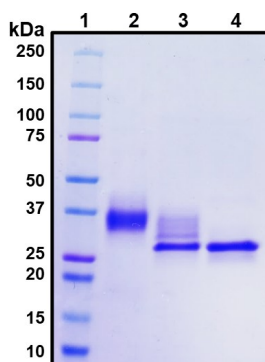
SDS-PAGE Image

Figure 1. Deglycosylation analysis of purified recombinant proteins. Lane 1, protein ladder (kDa). Lane 2, glycosylated protein (delivered to customers). Lanes 3 and 4, deglycosylated proteins under native and denature conditions respectively.

Shipping

Ice packs

Storage/Stability

Upon arrival, the protein may be stored for 2 weeks at 4°C. For long term storage, it is recommended to store at -20°C or -80°C in appropriate aliquots. Avoid repeated freeze-thaw cycles.

This product is furnished for LABORATORY RESEARCH USE ONLY.

Not for diagnostic or therapeutic use.