

Catalog Number: 230-30266

---

**Recombinant Human Alpha-synuclein (SNCA)****Source**

<b>Species</b>	Human
<b>Accession Number</b>	P37840-1
<b>Gene Symbol</b>	SNCA
<b>Expressed Region</b>	Asp2-Ala140
<b>Synonyms</b>	Alpha-synuclein (Non-A beta component of AD amyloid) (Non-A4 component of amyloid precursor) (NACP)

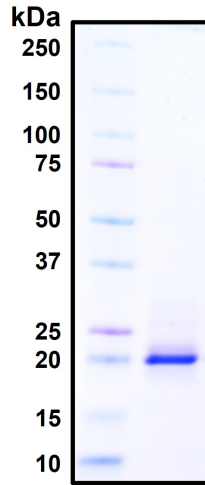
**Preparation**

<b>Expression System</b>	Human Embryonic Kidney 293 Cells
<b>Tag</b>	C-terminal histidine tag
<b>Purification</b>	His-tag affinity purification by immobilized metal ion affinity chromatography (IMAC)
<b>Purity</b>	>95%
<b>Purity Determined By</b>	SDS-PAGE under reducing conditions and visualized by Coomassie blue staining
<b>Molecular Weight</b>	Recombinant protein product has a calculated molecular mass of 15 kDa. Due to the abundant glycosylation, it migrates as approximately 20 kDa protein band in SDS-PAGE under DTT, beta-mercaptoethanol reducing conditions.

**Protein Specifications**

<b>Format</b>	Liquid
<b>Formulation</b>	Supplied as a 0.2 um filtered solution in PBS (pH 7.4) with 1% mannitol and 5% trehalose
<b>Concentration</b>	Lot specific (see the label on the vial), determined by Pierce BCA protein assay
<b>Endotoxin Level</b>	0.5 EU per ug of the protein as determined by the LAL method

SDS-PAGE Image



## Shipping

Ice packs

## Storage/Stability

Upon arrival, the protein may be stored for 2 weeks at 4°C. For long term storage, it is recommended to store at -20°C or -80°C in appropriate aliquots. Avoid repeated freeze-thaw cycles.

This product is furnished for LABORATORY RESEARCH USE ONLY.

Not for diagnostic or therapeutic use.