

---

## Recombinant Human GM-CSF (CSF2) Protein, GMP Grade

**Catalog Number:** 230-G3001

### Data Sheet / Certificate of Analysis (CoA)

Last Revised: 11/27/2024

---

### Source

<b>Species</b>	Human
<b>Accession Number</b>	P04141
<b>Gene Symbols</b>	CSF2, GMCSF
<b>Synonyms</b>	Granulocyte-macrophage colony-stimulating factor (GM-CSF) (Colony-stimulating factor) (CSF) (Molgramostin) (Sargramostim)
<b>Expressed Region</b>	Ala18-Glu144

---

### Preparation

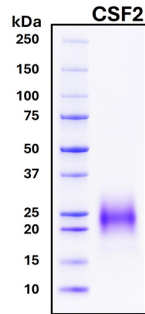
<b>Expression System</b>	HEK293 cells
<b>Tag</b>	C-terminal His-tag
<b>Purity</b>	> 95%
<b>Molecular Weight</b>	The recombinant human CSF2 protein has predicted molecular weight of 16 kDa. Due to glycosylation, the protein migrates as a $25 \pm 5$ kDa band on SDS-PAGE gel under reducing conditions.
<b>Endotoxin Level</b>	< 10 EU per mg of protein as determined by the LAL method

---

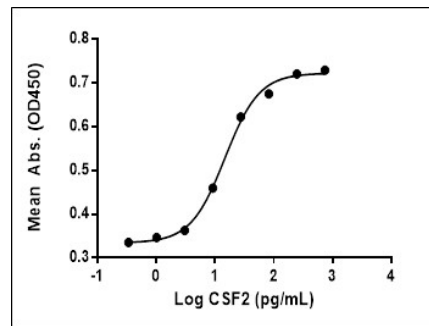
### Specifications

<b>Format</b>	White lyophilized powder
<b>Formulation</b>	Lyophilized powder from sterile filtered PBS, pH 7.4, with stabilizers.
<b>Reconstitution</b>	Briefly spin the vial and bring the contents to the bottom prior to opening. It is recommended to reconstitute at 0.5-1.0 mg/mL with sterile deionized water or 1x PBS.

### SDS-PAGE Image



### Activity



### Shipping

The product is shipped with ice packs. Upon arrival, immediately store it at the temperature recommended below.

### Storage/Stability

- Use a manual defrost freezer and avoid repeated freeze-thaw cycles.
- Upon arrival, the lyophilized protein may be stored for 2 weeks at 4°C.
- For long term storage, it is recommended to store desiccated below -20°C in a manual defrost freezer.
- Generally, the shelf life is up to 12 months from date of receipt at -20°C or -80°C under sterile conditions.
- Following reconstitution, the protein may be stored for 2 weeks under sterile conditions at -20°C. For long term storage, it is recommended to make appropriate aliquots at -20°C or -80°C.